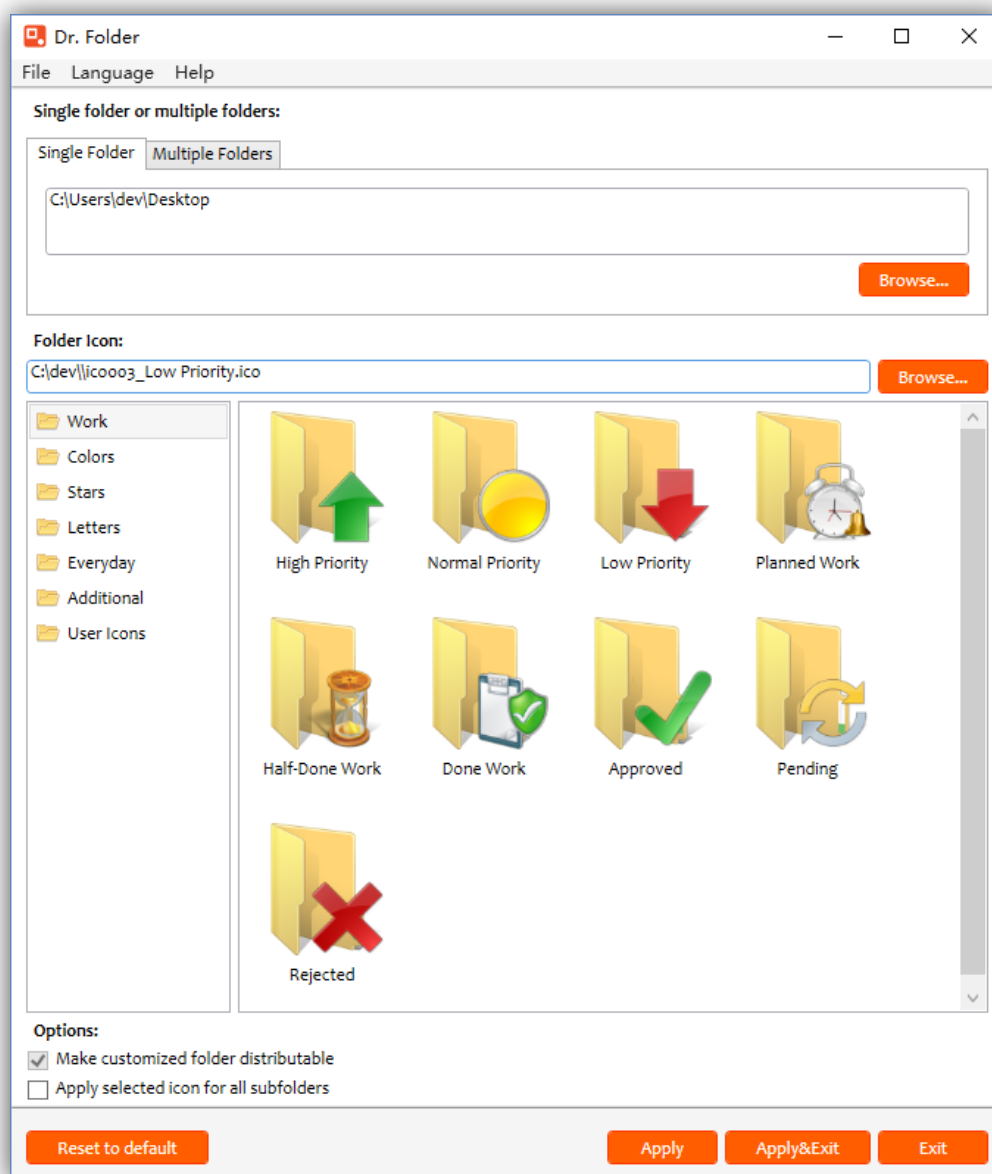


Dr. Folder - Customize folder icon and color with just one mouse click!

Dr. Folder lets you mark folders with color-coded and image-coded icons in one mouse click, making folders easy to find. You can change the icon from the context menu of the selected folder, or from the program using its simple interface and tools. With Dr. Folder, you can replace the icon of a single folder, or change the icon of multiple folders at once, change the system default icon, restore the default icon, add your own icons to the built-in library and customize the Dr. Folder context menu to your preferences.



Dr. Folder offers a rich selection of icons to categorize folders by different parameters:

- Priority (high, normal, low)



- Level of project completeness (done, half-done, planned)



- Colors



- Stars



- Status (approved/rejected/pending)



To find out the latest news about Dr. Folder Software, visit:

<http://hi.ylcomputing.com/products/dr-folder>

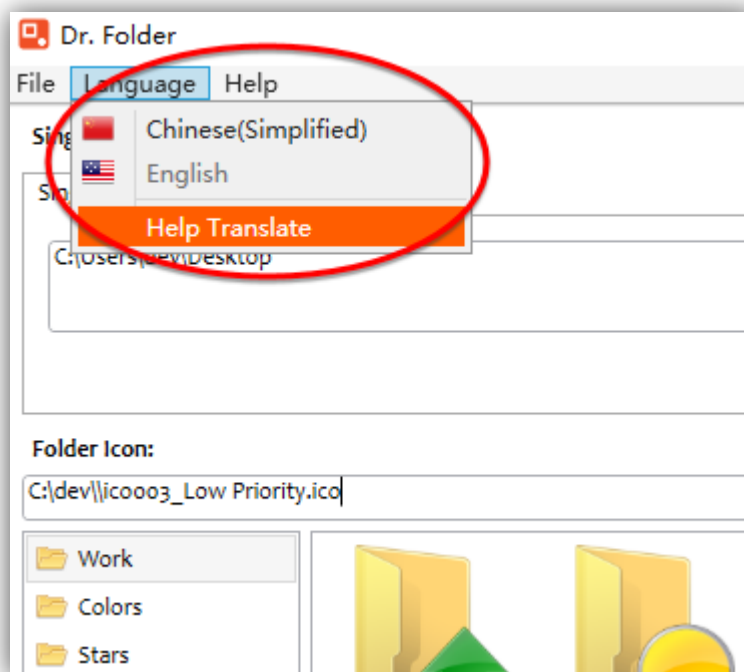
One-stop solution

Among the first of things when Windows 7 launched, users needed a stable program which can quickly change the folder icons and restore them back to the original state in one click. So we are happy to present a really good stable app for this purpose. Dr. Folder is a brilliant one-stop solution for all the folder icon changing needs.

Integration with Explorer

Seamless integration with Windows Explorer and core services. Dr. Folder adds item in context menu of Windows Explorer and core services.


Translated into your language



In standard package English and Chinese language files are included. Icon names in themes can also be translated. Also you may download more languages for Dr. Folder.

<http://hi.ylcomputing.com/products/dr-folder/translation>

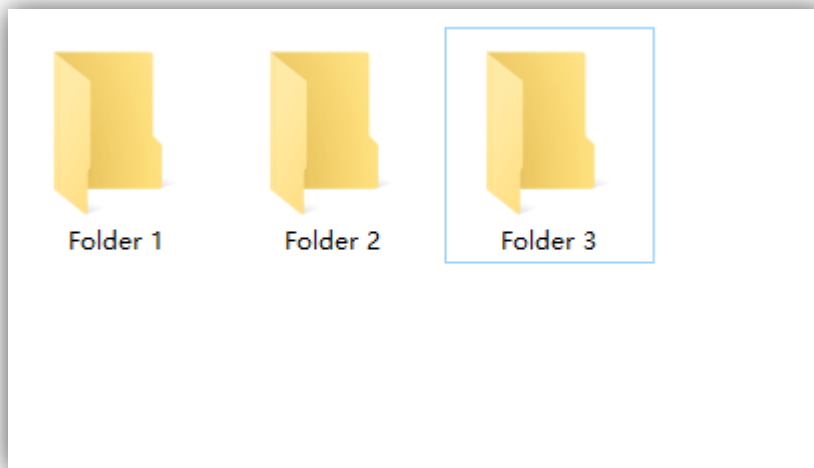
Change a folder icon

Dr. Folder lets you change icons from Dr. Folder, or from the context menu of the selected folder. After the installation a new entry called  **Change Folder Icon with Dr. Folder** is added to the context menu of all folders. You can use this entry to replace any default icon with a new one, without having to run Dr. Folder.

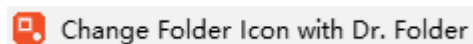
1. Change the folder icon from the context menu

To change the folder icon from the context menu, follow these steps:

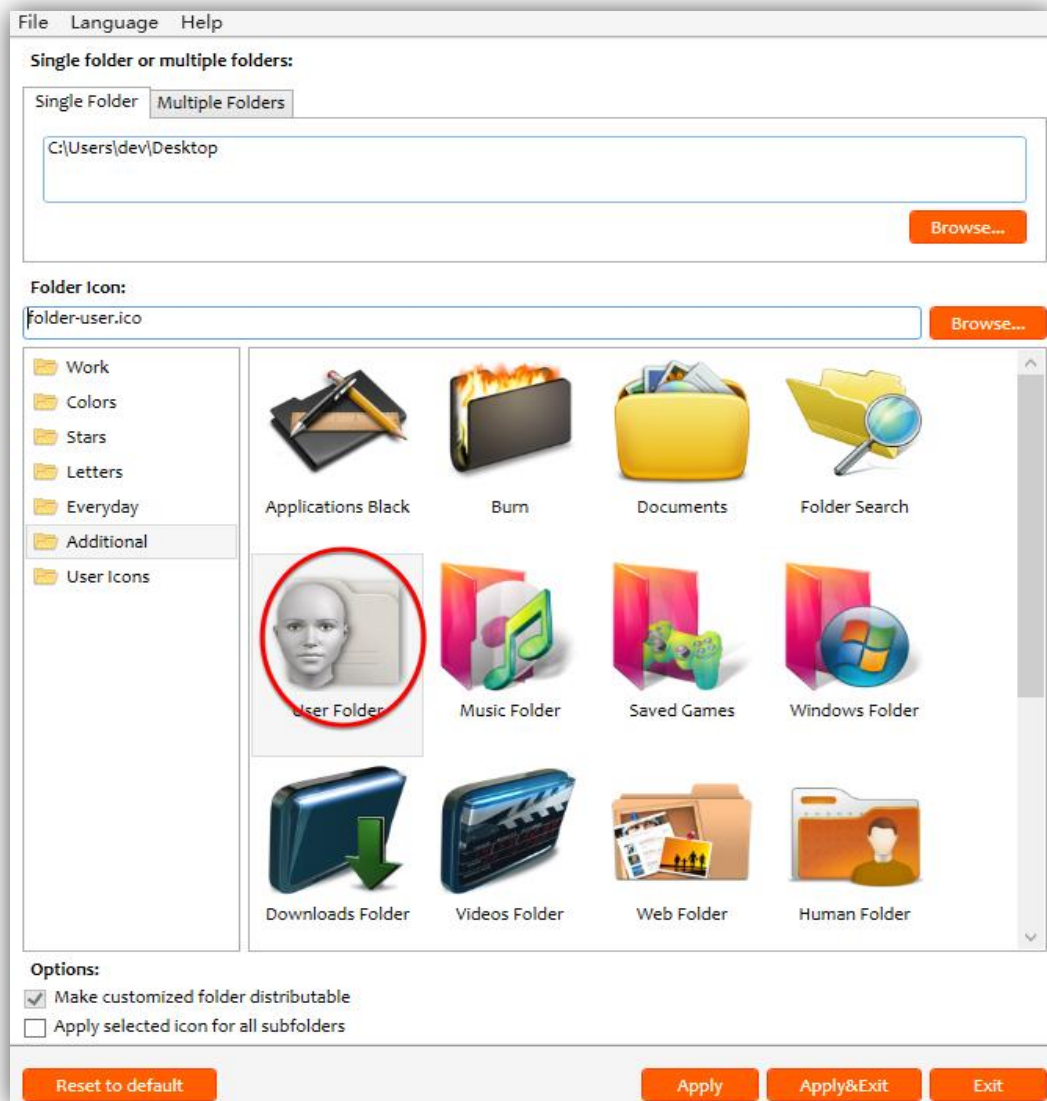
1. Right-click the folder.



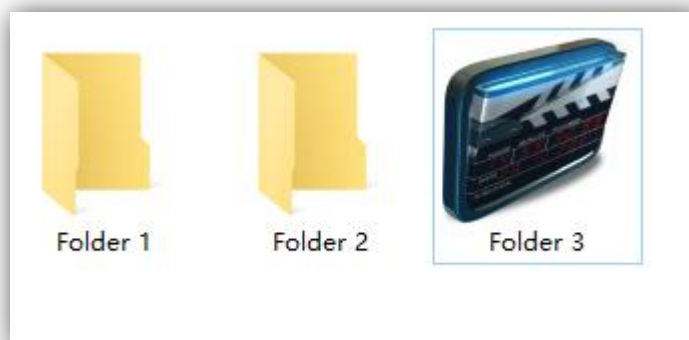
2. Select Change Folder Icon with Dr. Folder.



3. Select a new icon for this folder, and then click Apply.



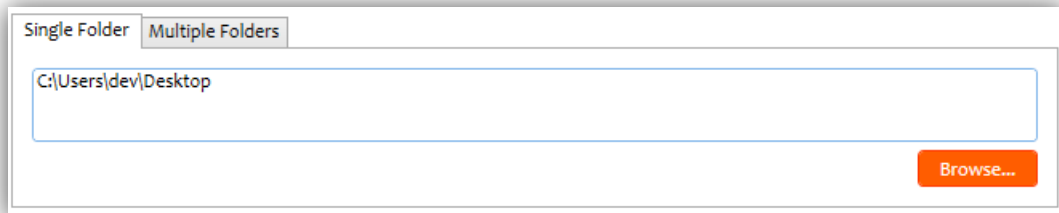
Once selected, the new icon is applied to the folder instantly.



2. Change the folder icon from Dr. Folder

To change the folder icon from Dr. Folder, follow these steps:

1. Run Dr. Folder.



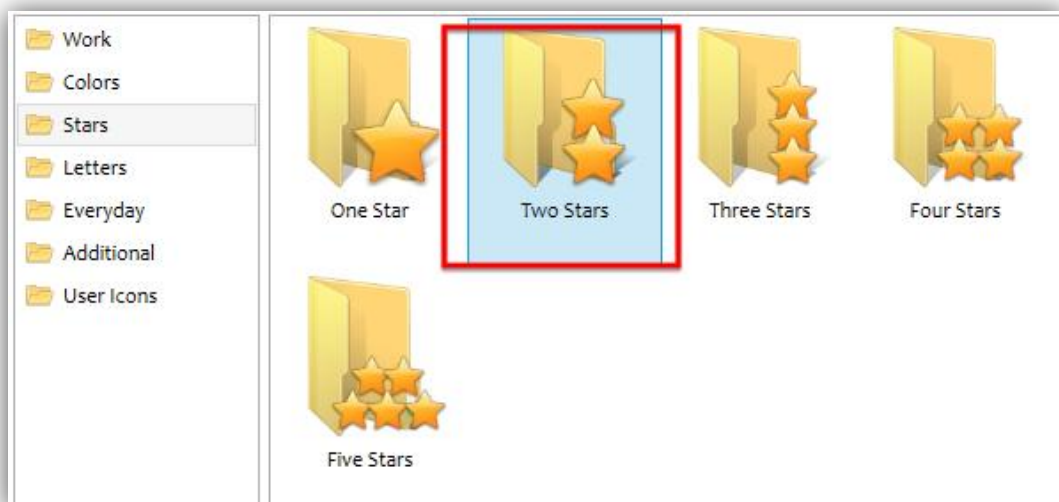
2. Click Browse.

The Browse dialog appears. Use this dialog to select the folder whose icon you want to change.

The path to the selected folder is shown in the Folder box (see above).

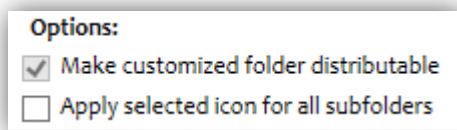


3. Select the new icon.



The library has several categories, each with its own set of icons.

4. Select the options (if necessary).



Dr. Folder offers two options that define how to apply a new icon:

***Make customized folder distributable** - On selecting this option, the icon folder becomes "distributable" or "portable". A distributable icon remains unchanged when the folder is moved to a new location, such as USB stick, optical disk, another computer, or when the user reinstalls the Windows system.

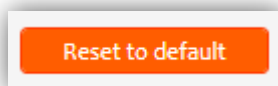
***Apply selected icon to all subfolders** - A new icon will be applied to the selected folder and all its subfolders.

5. Click Apply.



The selected icon is applied to the folder instantly. If you want to exit Dr. Folder after icon applied, Click button ***Apply&Exit*** instead of ***Apply***.

If necessary, the user can restore the default icon by clicking ***Reset to default*** button.



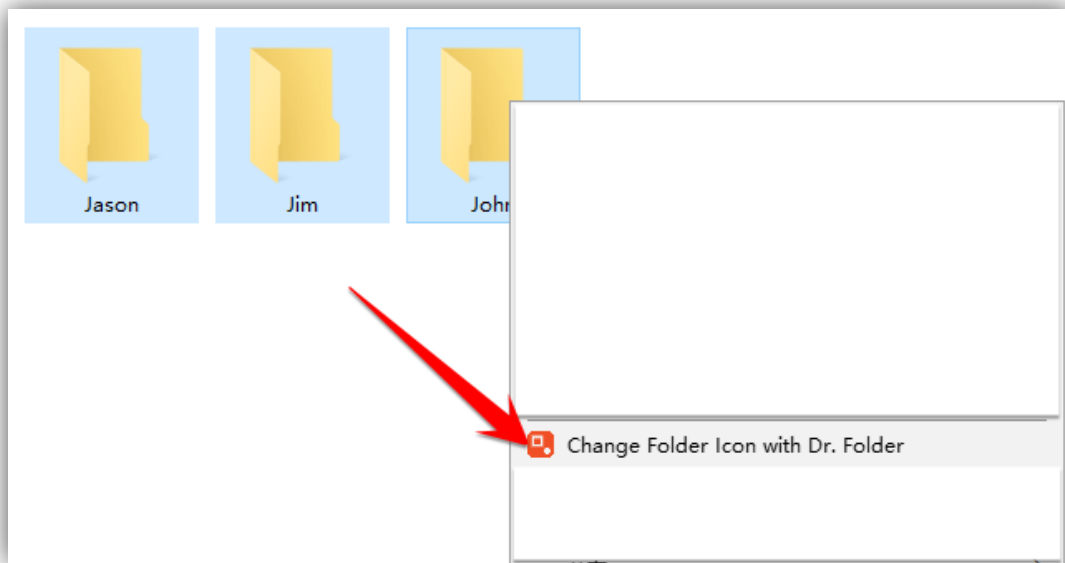
Change multiple folder icons

Dr. Folder lets you change multiple folder icons at once. You can do it from the context menu, or from Dr. Folder.

1. Change multiple folder icons from the context menu

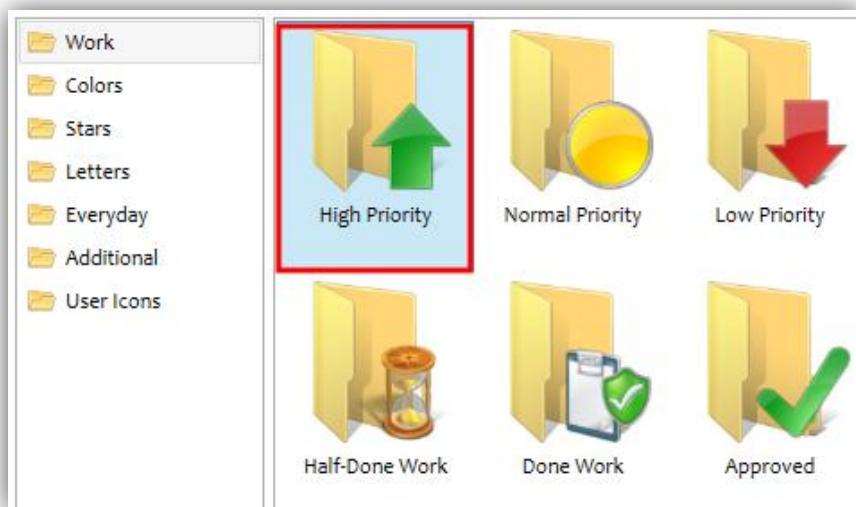
To change multiple folder icons from the context menu, follow these steps:

1. Select the folders, and then right-click the selection.

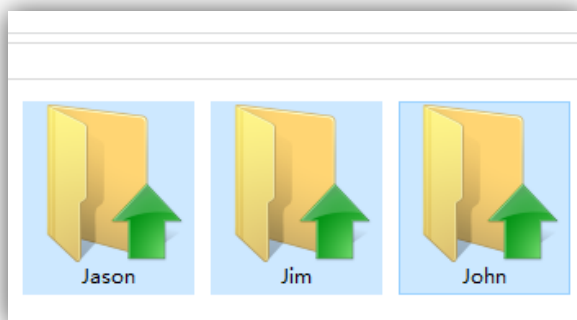


This opens the context menu with the Dr. Folder entry.

2. Select Dr. Folder, and then the icon you want to apply.
In our example this icon is High Priority.



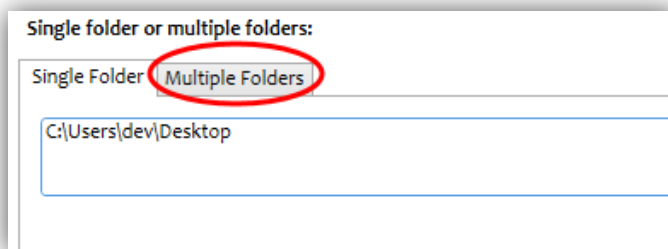
The icon is applied to the selected folders all at once.



2. Change multiple folder icons from Dr. Folder

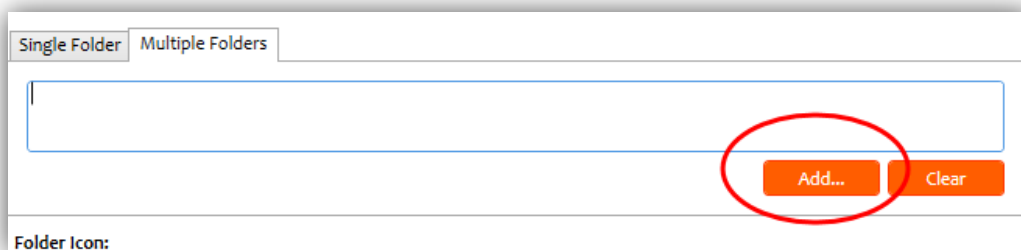
To change multiple folder icons from Dr. Folder, follow these steps:

1. Run Dr. Folder
2. On the main screen, select Multiple Folders.

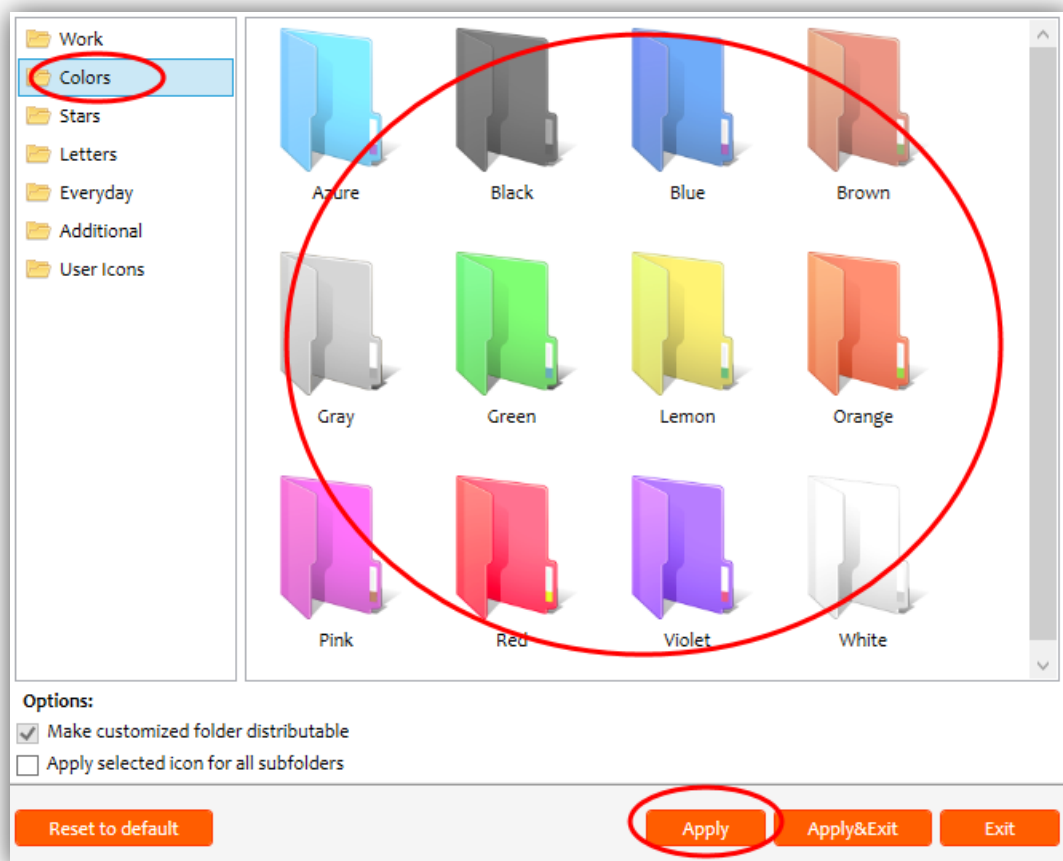


This opens the Folders list box that allows you to add multiple folders.

3. Click the Add button to select the folders.



4. Select an icon from the Icon Picker, and then click Apply.



Change network folder icons

Dr. Folder lets you change a network folder icon. A network folder is located on the other computer, and you can access it by clicking the My Network Places icon on the Windows desktop. The path to a network folder looks like this: \\ComputerName\FolderName.

Dr. Folder works only with the folders that can be accessed through My Network Places in Windows Explorer and located on a Windows computer. The program cannot change folder icons on NAS servers, or on computers that can be accessed only via FTP.

Changing network folder icons is possible only in registered version of Dr. Folder. You can change a network folder icon either from the context menu of the selected folder, or from Dr. Folder. It is possible to change shared folder icons ONLY if you have the "Write" access to the directory.

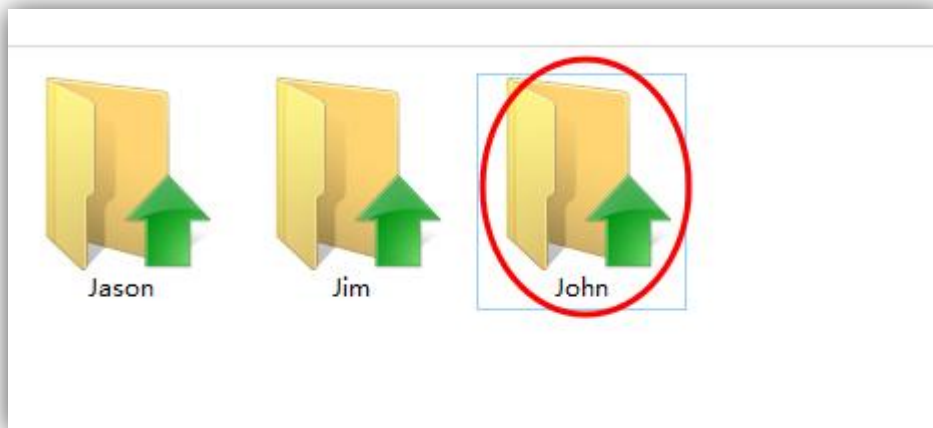
If you change the icon from Dr. Folder, the program enables Make customized folder distributable option for all network folders. You can disable this option if necessary. In this case, Dr. Folder does not copy the icon to the network folder. On computers where Dr. Folder is not installed, the folder icon looks like the default one. When you change the icon from the context menu, Dr. Folder copies the new icon to the folder. This makes the icon

change visible to all computers in the network.

Restore default icons

Dr. Folder lets you restore the default icon either from the context menu of the folder, or from Dr. Folder.

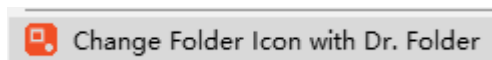
Lets say, for example, it is necessary to restore the default icon of the folder called *John*.



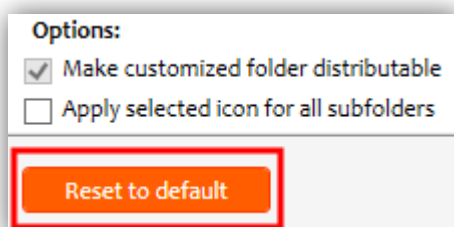
1. Restore the default icon from the folder context menu

To restore the default icon from the context menu, follow these steps:

1. Right-click the folder. And then select



2. Click **Reset to default** button



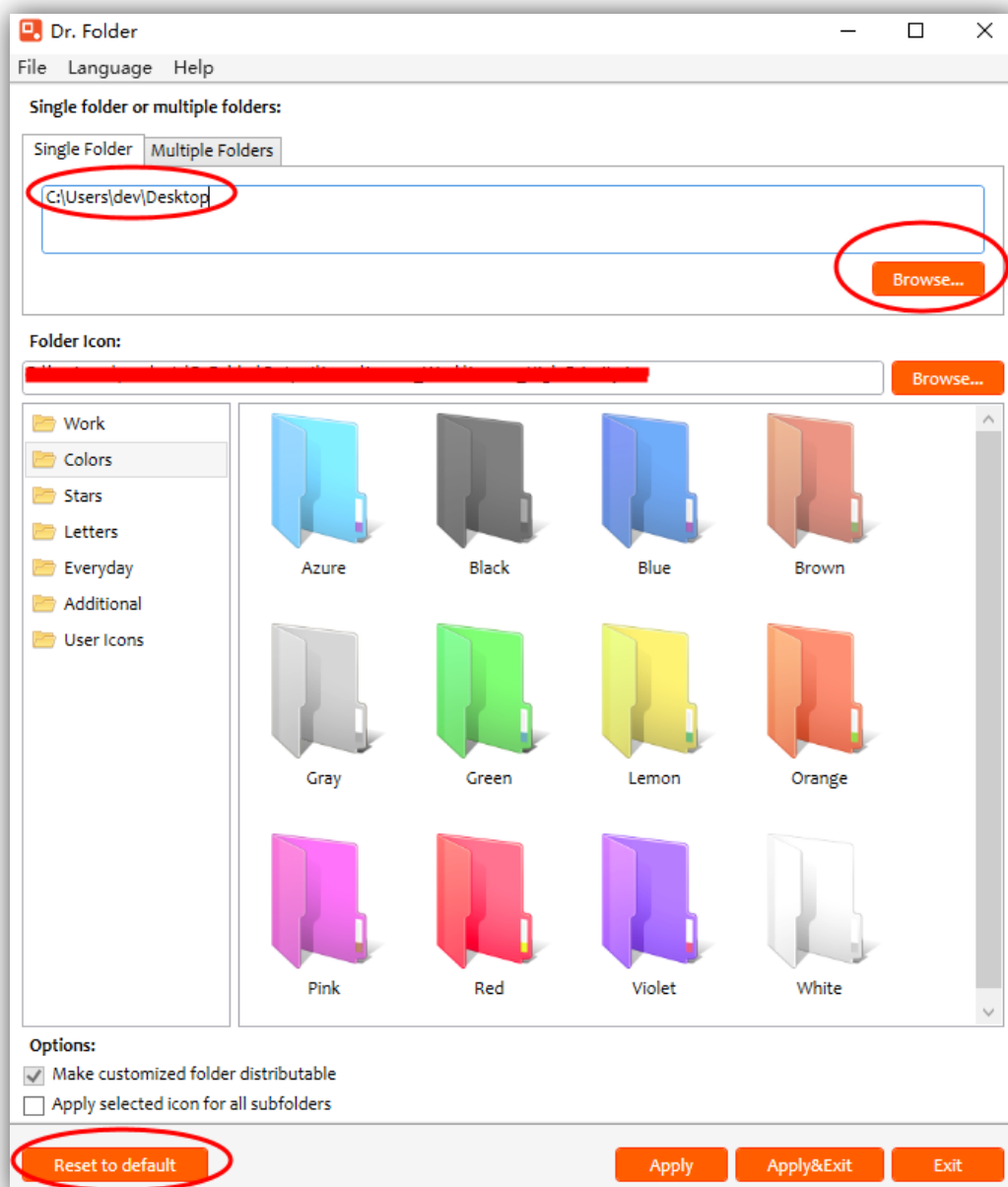
On selecting **Reset to Default**, the icon of the selected folder is restored to the default one.

2. Restore the default icon from Dr. Folder

To restore the default icon from Dr. Folder, follow these steps:

1. Run Dr. Folder.
2. To select the folder, click Browse

This opens the Browse dialog that can be used to select the folder whose default icon you want to restore.



Please note: If you want to restore the default icon for multiple folders, it is necessary to select **Multiple Folders**. This opens the Folders list box. Then use the Add button to make

the list of folders whose default icon needs to be restored.

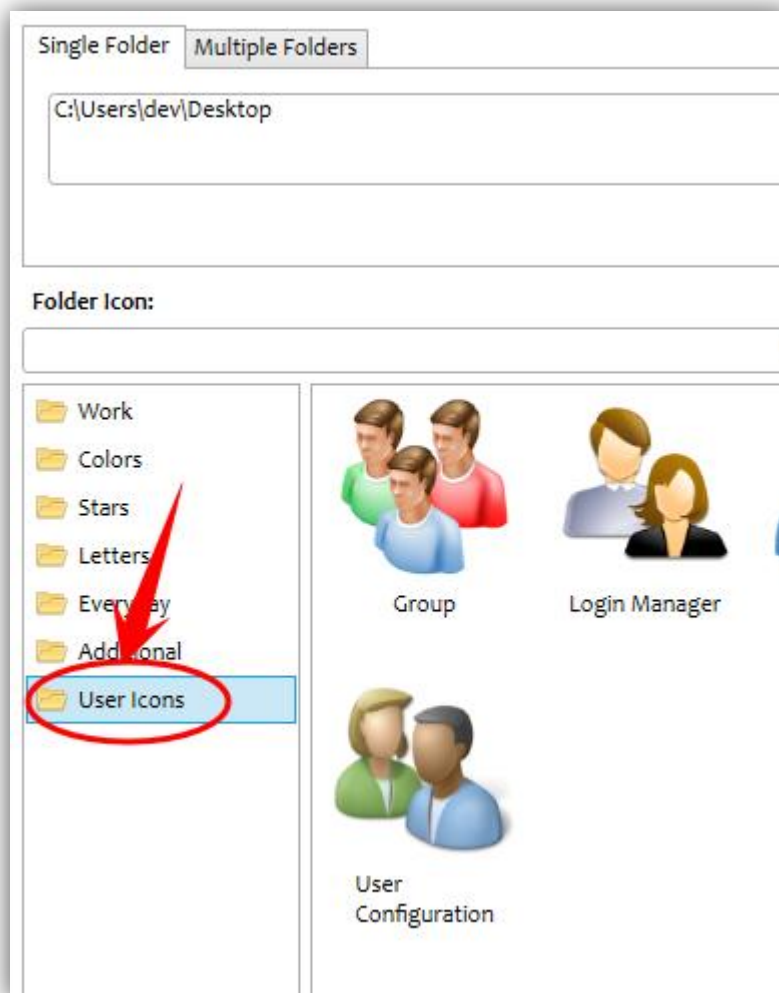
3. Click **Reset to default** to restore default icon for Chosen Folder(s).

Add own icons to program

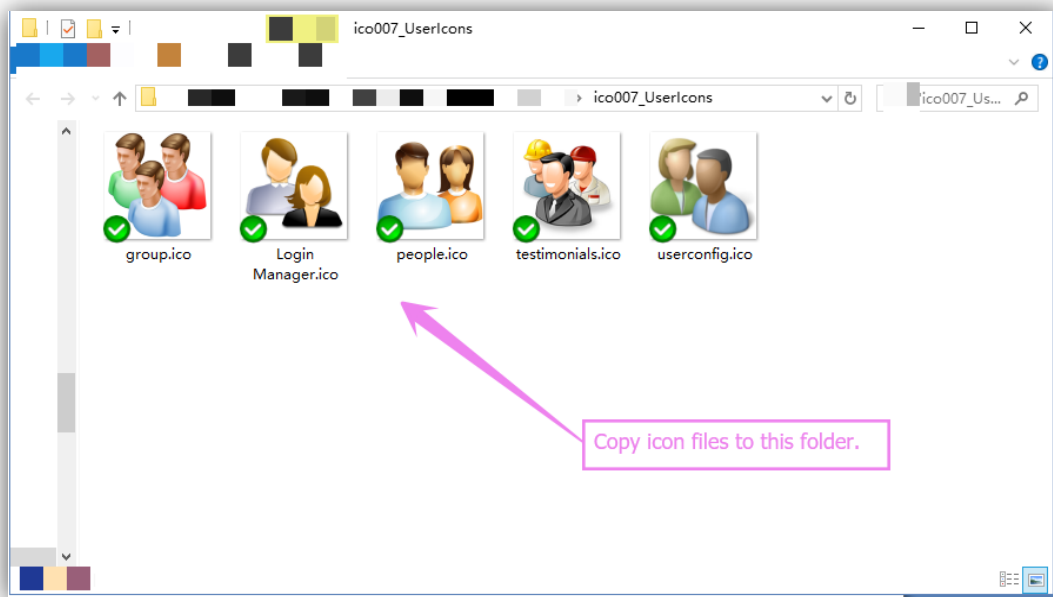
Dr. Folder has a large library of icons. However users can add their own icons to the program.

To add a new icon to the program, follow these steps:

1. Run Dr. Folder.
2. Double-click **User Icons** item. And then it will open User Icons folder in Explorer.



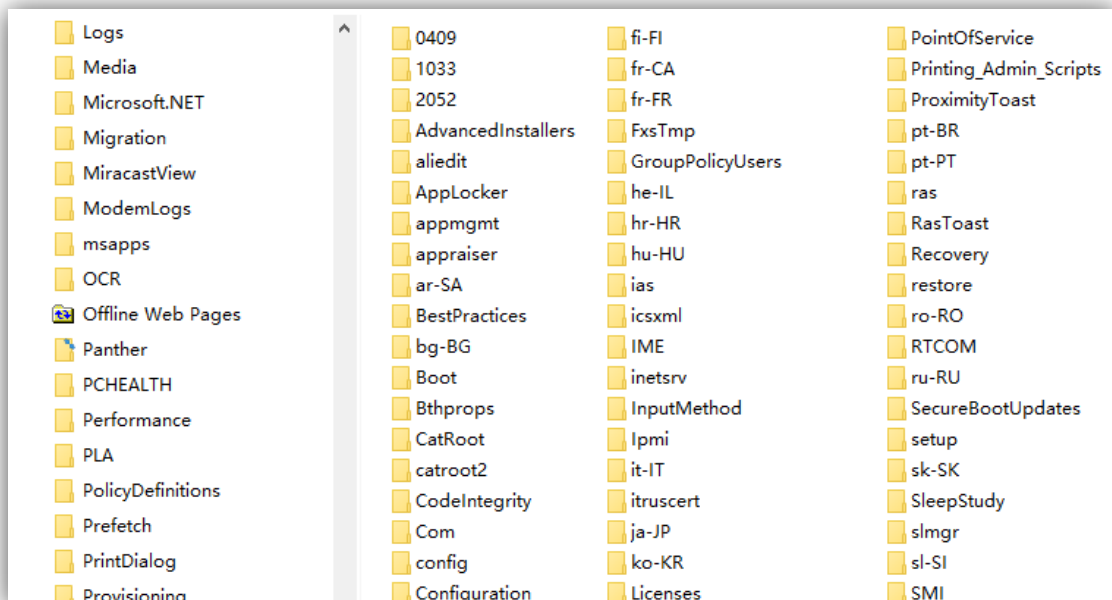
3. Copy the icon files you want to use into this folder.



4. Done. Now you can use your own icons in Dr. Folder.

Change system default icon

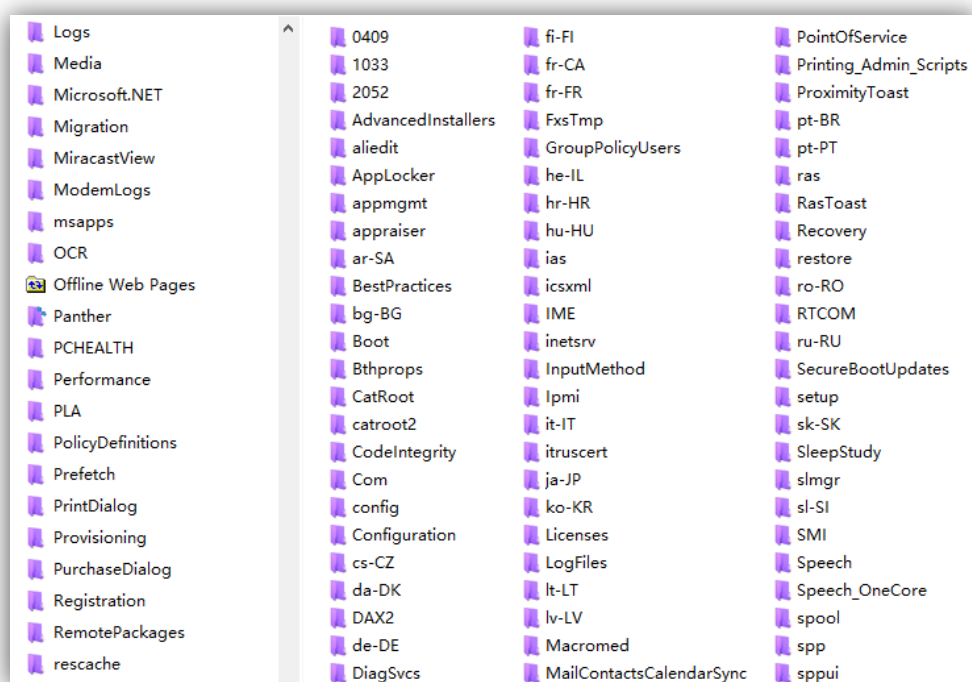
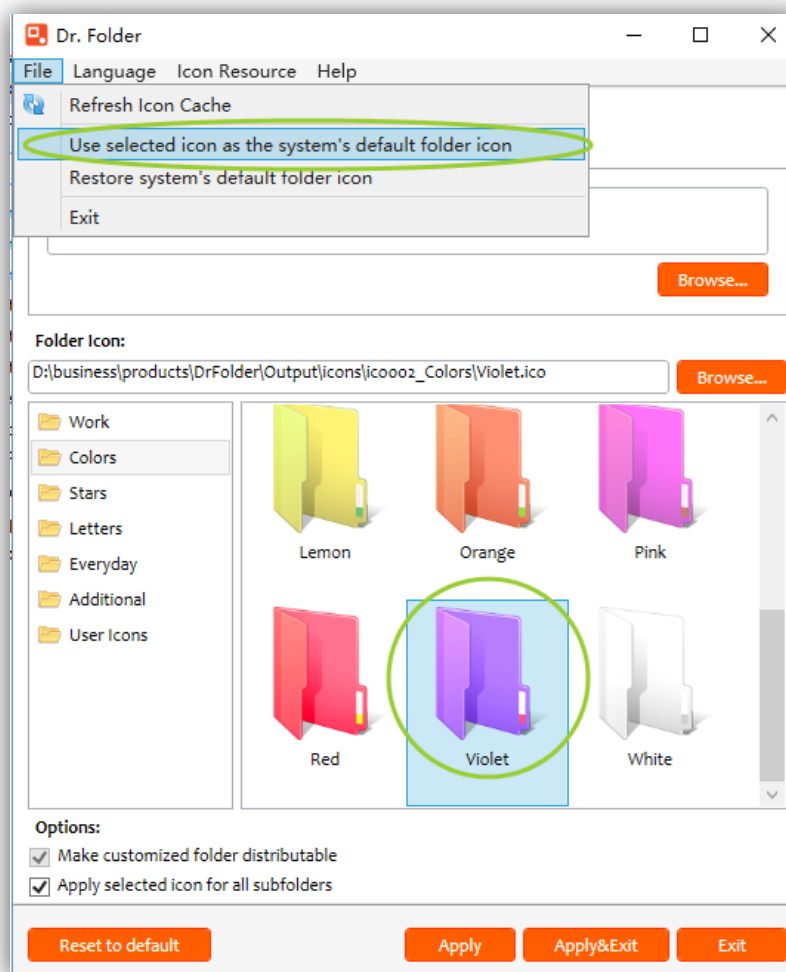
Dr. Folder lets you change the system default icon. The system default icon is the icon of all folders in the system. By default the color of this icon is yellow.



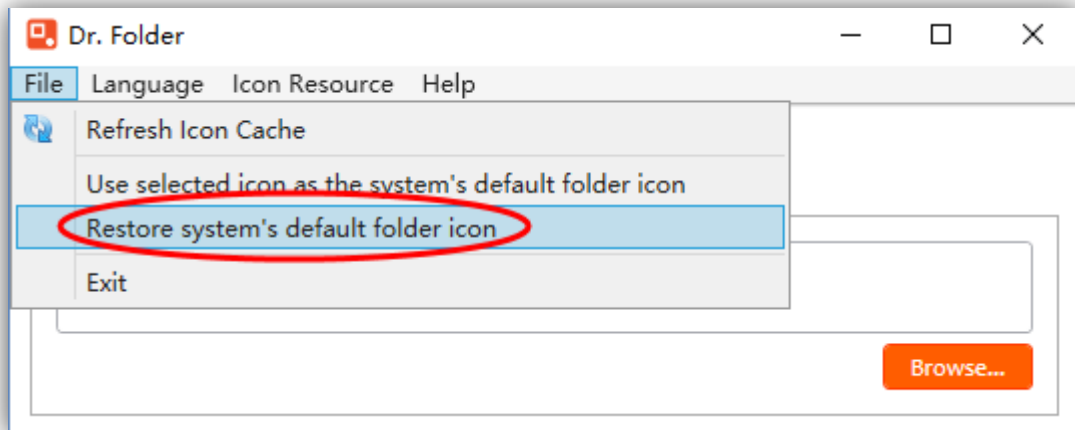
To customize the system default icon, follow these steps:

1. Run Dr. Folder.
2. Select the desired icon.
3. On the menu bar, select **File > Use selected icon as the system default folder icon**.

On selecting the option, the icon is applied to all folders in the system.



You can restore the default folder icon with a single click. For this, select **File > Restore System Default Folder Icon**.



On selecting this option, the system default folder icon will be restored instantly.

Support and other products

Technical support

Technical support is provided ONLY to registered users. If you are a registered user of Dr. Folder and you have questions or suggestions, please contact us using the contact form. We shall answer you as soon as we can.

Contact form address: <http://hi.ylcomputing.com/products/dr-folder/support>

To receive a reply quickly, please write to us from the e-mail which was used for registration and provide us with your Order ID in the message.

Feedback

If you have any comments or concerns about our software, please direct them to us using the contact form: <http://hi.ylcomputing.com/products/dr-folder/support>. Your feedback is important to us as it helps to understand how to make our software a better product for you. Many features and significant portions of our program interface were inspired by comments from our users. So if you have an idea for a new feature, or a better way of doing something, please drop us a line.

Visit our website

Our website is <http://www.ylcomputing.com>

YL Computing, Inc is a software design and marketing corporation which was founded in November 2006. We are one of the original manufacturers and vendors of our software and related products. Since our beginning we have come a long way in terms of service, products, and technology to offer you the best in tools software solutions.

Our products have received major write-ups in: Time Magazine, Newsweek, Business Week, The Washington Post, ABC World News Tonight, NBC Nightly News, CNN and MSNBC.

Our company mission is to provide users with quality tools software. We offer pre sale support and most post sale support to attempt to keep our customers 100% satisfied.

If you have any questions for us please feel free to contact us: support@ylcomputing.com

How to register

Dr. Folder is distributed as shareware. Once the trial period is over, the user has to buy the registration license or uninstall the program.

Registered users are entitled to the following benefits:

- § Additional icons
- § Startup without nag screens and delays
- § Free support by email
- § Free upgrades to minor versions

To register Dr. Folder, follow the steps below:

1. Run Dr. Folder.
2. On the menu bar, select **Help > Order Now**.

The program opens the page called Order Dr. Folder in the default browser. On the page, the user can register the selected version.

3. Click the **Buy Now** button.

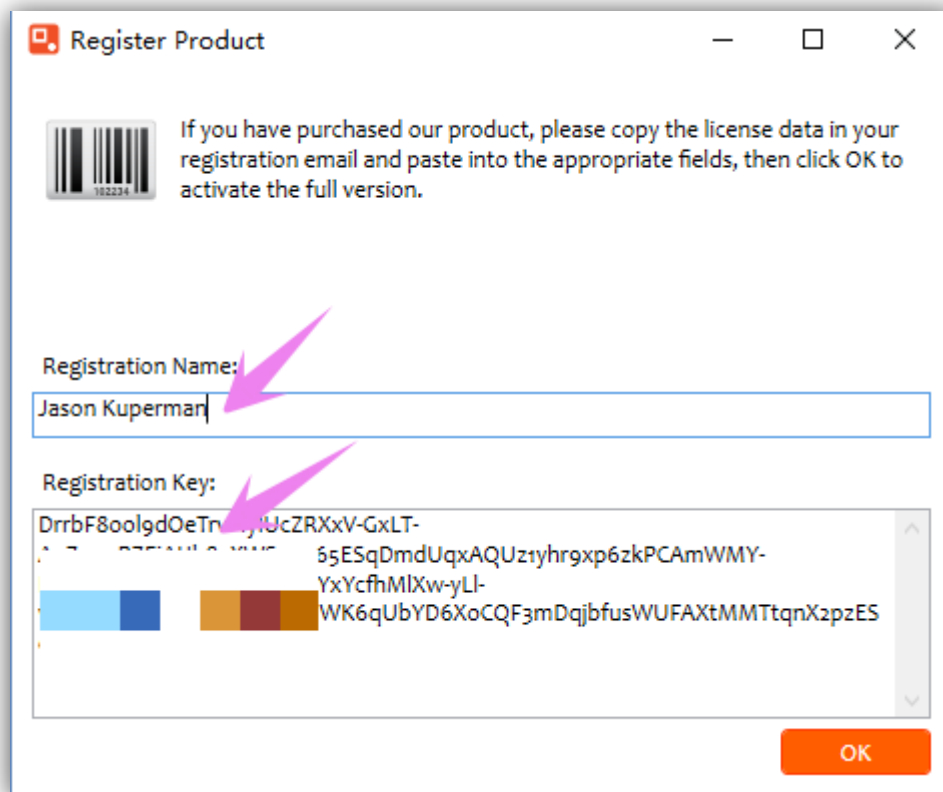
This opens the shopping cart with the order form to complete. Once the order is placed, the

customer receives a unique registration key by email.

4. Select **Help > Enter Registration Code**.

This opens the dialog where the user can enter the registration code.

5. Enter the registration code.



The image shows a Windows-style dialog box titled "Register Product". It has a standard title bar with minimize, maximize, and close buttons. Inside the dialog, there is a barcode icon on the left and instructional text on the right: "If you have purchased our product, please copy the license data in your registration email and paste into the appropriate fields, then click OK to activate the full version." Below this, there are two input fields. The first is labeled "Registration Name:" and contains the text "Jason Kuperman". A pink arrow points to this field. The second is labeled "Registration Key:" and contains a long alphanumeric string: "DrrbF8oolgdOeTn...yUcZRXxV-GxLT-65ESqDmdUqxAQUz1yhr9xp6zkPCAmWMY-YxYcfhMLXw-yLI-WK6qUbYD6XoCQF3mDqjbfusWUFAXtMMTtqnX2pzES". A pink arrow points to the beginning of this string. At the bottom right of the dialog is an orange "OK" button.

6. Click OK.

Dr. Folder is registered and all features are unlocked. The user can check the registration status by selecting **Help > About...** If the registration is successful, the program displays the name of the registered owner on middle of the About dialog.

